

Precision Zero Air

Zero Air Generator for GC

Part Number : See Reverse

Service Kit : 08-3611



Your local **gas generation** partner

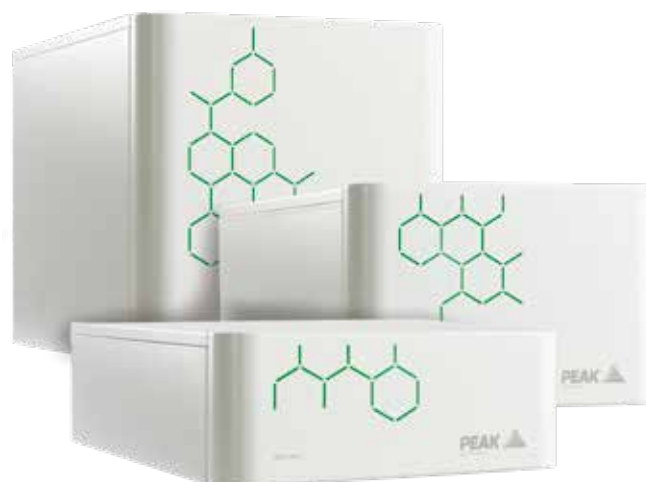
Description

The Precision Zero Air generators are designed specifically to supply clean, dry, hydrocarbon-free air to be used as detector gas for GC. Five models are available, delivering 1.5, 3.5, 7, 18 and 30 liters per minute flow rate, dependent upon the specific requirements.

As with all Precision Series generators, Zero Air benefits from a compact and modular, stackable design, minimizing the total footprint required for GC gas supply, and providing flexibility to add or remove modules as your laboratory requirements evolve over time. There are three module heights, the 1.5L and 3.5L come in the smaller unit, the 7L and 18L in the medium with the 30L generator housed in a larger unit.

Applications

- ◆ **Detector Gas**
 - Flame Support / Air



Zero Air 1.5L/3L unit size pictured in a typical Precision stack.

Key Features

- ◆ Integrates seamlessly with other Precision units
- ◆ Hydrocarbon content <0.05ppm for market-leading purity
- ◆ Minimum lifetime maintenance requirements, no expensive catalyst chamber replacements
- ◆ Avoid risk of contaminants entering the system (when switching out empty cylinders)
- ◆ No risk of running out of gas in middle of analysis
- ◆ Compatible with Precision Air Compressor
- ◆ 12 month comprehensive on-site warranty
- ◆ Status indicative lighting feature (amber warm-up, green ready)



Technical Specifications	Zero Air 1.5L	Zero Air 3.5L	Zero Air 7L	Zero Air 18L	Zero Air 30L
Max Flow Rate	1.5L/min	3.5L/min	7L/min	18L/min	30L/min
Max Pressure	80 psi / 5.5 bar				100 psi / 6.9 bar
Hydrocarbon Concentration (as Methane)	<0.05ppm				
Gas Outlets	1 x 1/4" BSPP				
Min/Max Air Inlet Pressure	90-145 psi 6.2-10 bar		110-125 psi 7.5-8.6 bar		110-145 psi 7.6-10 bar
Min Air Inlet Flow	1.5L/min	3.5L/min	7L/min	18L/min	30L/min
Min Inlet Air Quality	ISO8573 - 1:2010 Class 1.4.1				
Phthalates	None				
Suspended Liquids	None				
Start-Up Time For Purity	60 minutes				
Operating Temperature	5°C - 35°C / 41°F - 95°F				
Electrical Requirements	230VAC 50/60 Hz 2A 110VAC 50/60Hz 1A		230VAC 50/60Hz 5.4A 110VAC 50/60 Hz 3.3A		230VAC 50/60 Hz 11A 110VAC 50/60Hz 6.7A
Power Consumption	220 Watts @ 110VAC or 230 Watts@ 230VAC		594 Watts @ 110VAC or 759 Watts @ 230VAC		1210 Watts @ 110VAC or 1541 Watts @ 230VAC
Heat Output	up to 785 BTU/Hr		up to 2590 BTU/Hr		up to 5255 BTU/Hr
Generator Dimensions (WxDxH)	38.0 x 54.0 x 15.6 cm 14.9 x 21.2 x 6.14"		38.0 x 54.0 x 25.6 cm 14.9 x 21.2 x 10"		38.0 x 54.0 x 40.5 cm 14.9 x 21.2 x 15.9"
Generator Weight	16 Kg / 35 lbs		25kg / 55.1 lbs		41 Kg / 90.3 lbs

Ordering Information	Zero Air 1.5L		Zero Air 3.5L		Zero Air 7L		Zero Air 18L		Zero Air 30L	
	110 V	230 V	110 V	230 V	110 V	230 V	110 V	230 V	110 V	230 V
Part Number	60-1501	60-1500	60-3501	60-3500	60-0008	60-0007	60-0019	60-0018	60-0031	60-0030
Annual Service Kit										
Standard Maintenance Plan										
Complete Maintenance Plan										

Precision Air Compressor	110v	230v	Annual Service Kit
Part Number	65-1555	65-0555	08-8372

[PEAK Protected]™

Peak Scientific gas generators define the benchmark in reliability, convenience and performance in laboratories around the world, and come backed by a comprehensive on-site 12 month warranty. Beyond this period however you can ensure that your investment continues to be **[Protected]** by our extensive generator care cover.

Our world-class aftercare support packages deliver a program of scheduled preventative maintenance whilst giving you the reassurance of instant access to worldwide technical support and priority on-site response in the untimely event of a breakdown.

Peak Scientific's Quality Management System conforms to: ISO:9001:2008



Product Certifications



* CSA certification applies to 1.5 and 3.5 models only.



WolfLabs

Pricing on any accessories shown can be found by keying the part number into the search box on our website.

The specifications listed in this brochure are subject to change by the manufacturer and therefore cannot be guaranteed to be correct. If there are aspects of the specification that must be guaranteed, please provide these to our sales team so that details can be confirmed.

www.wolflabs.co.uk

Tel : 01759 301142

Fax : 01759 301143

sales@wolflabs.co.uk

Please contact us if this literature doesn't answer all your questions.